

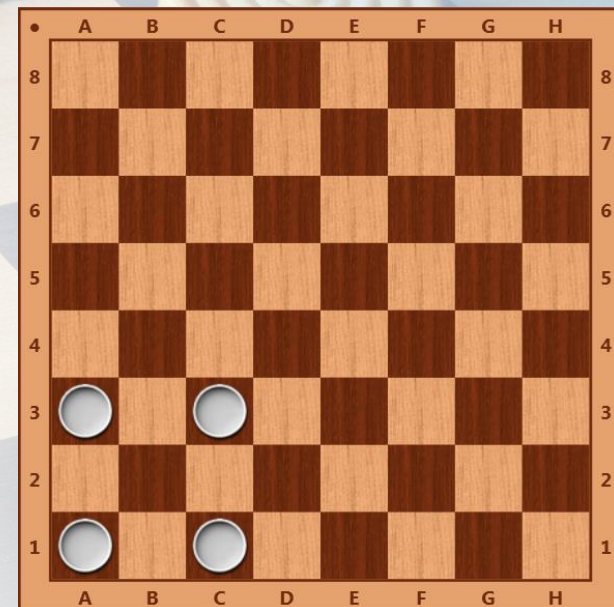
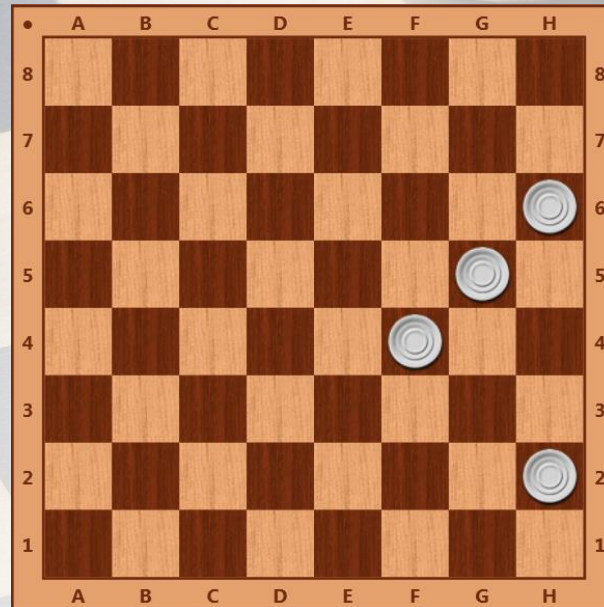
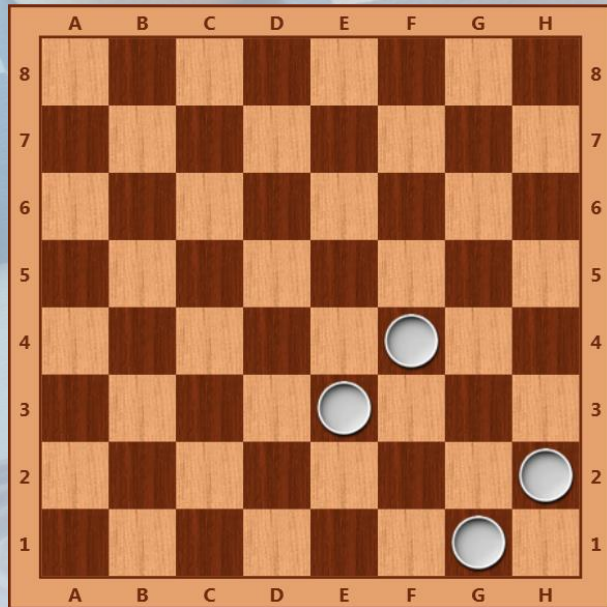


Муниципальное автономное образовательное учреждение  
дополнительного образования города Иркутска  
«Дворец детского и юношеского творчества»

# Приём «Петля»

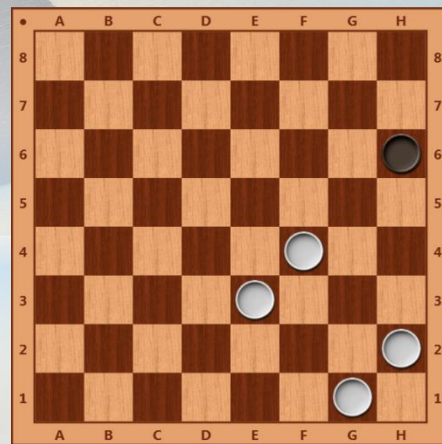
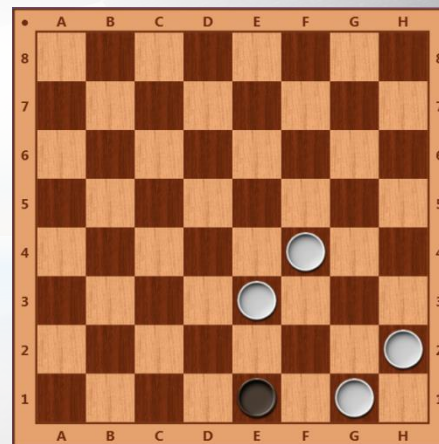
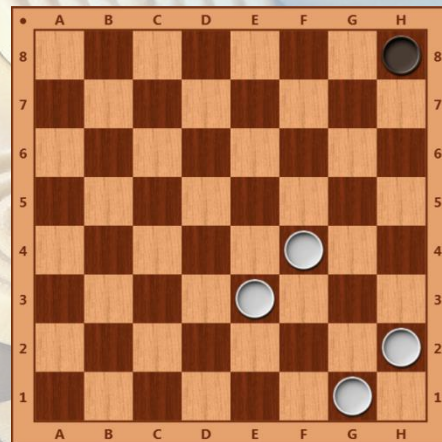
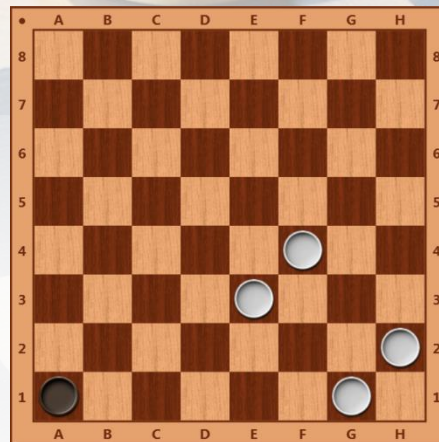
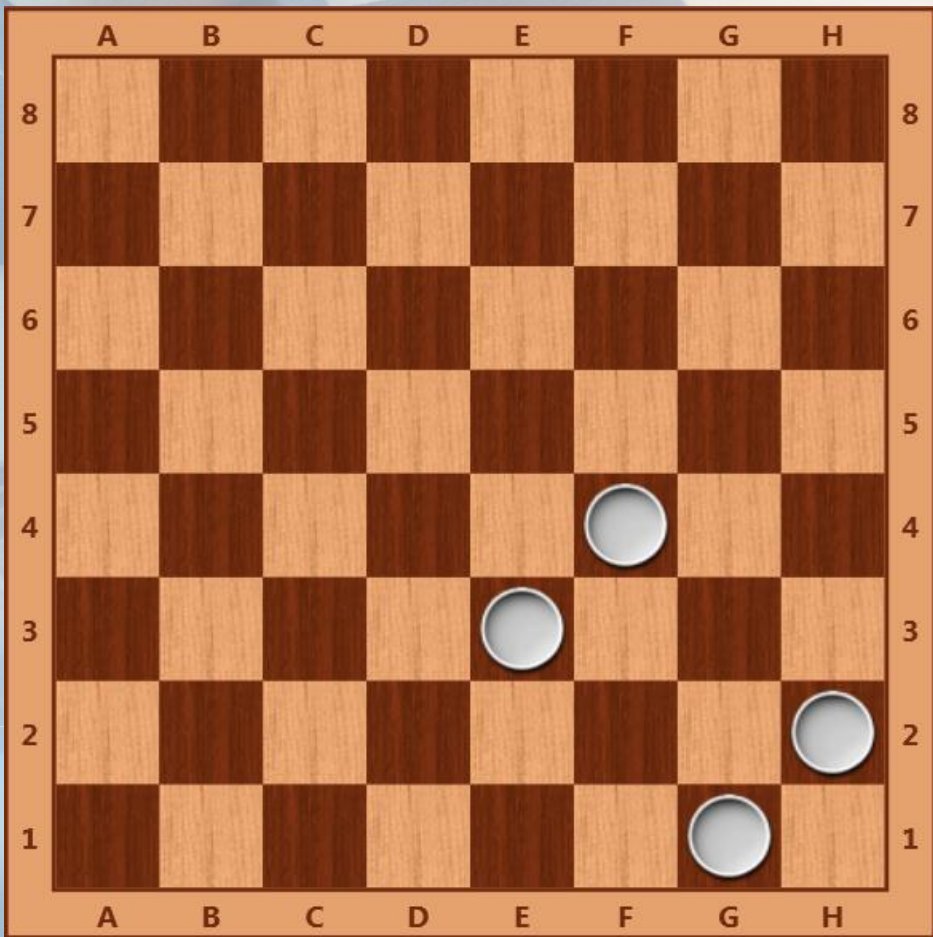
*Составитель: Калинин Д.А.,  
педагог дополнительного образования*

# Три построения петли

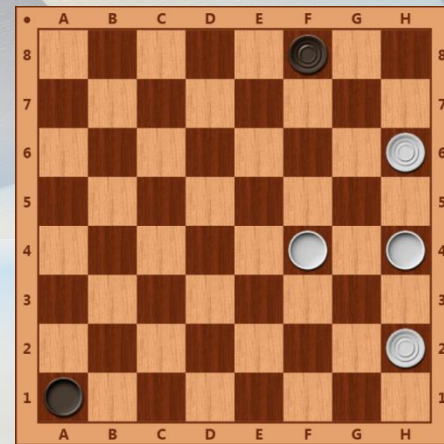
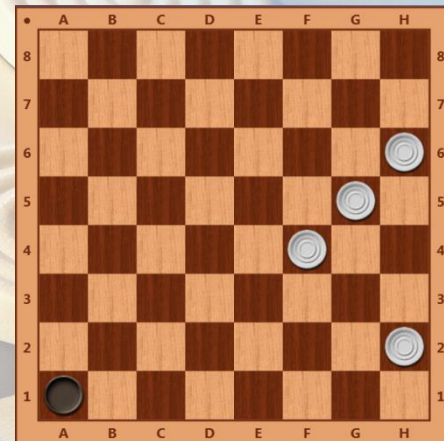
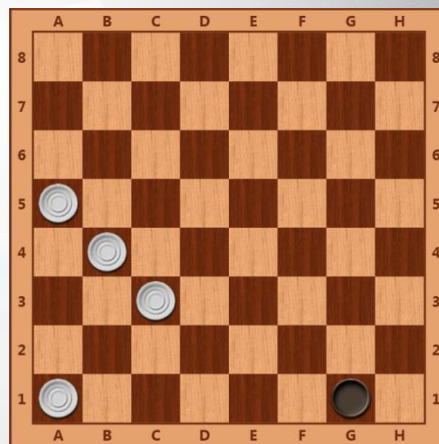
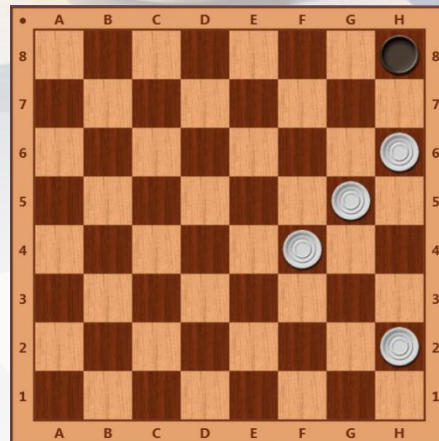
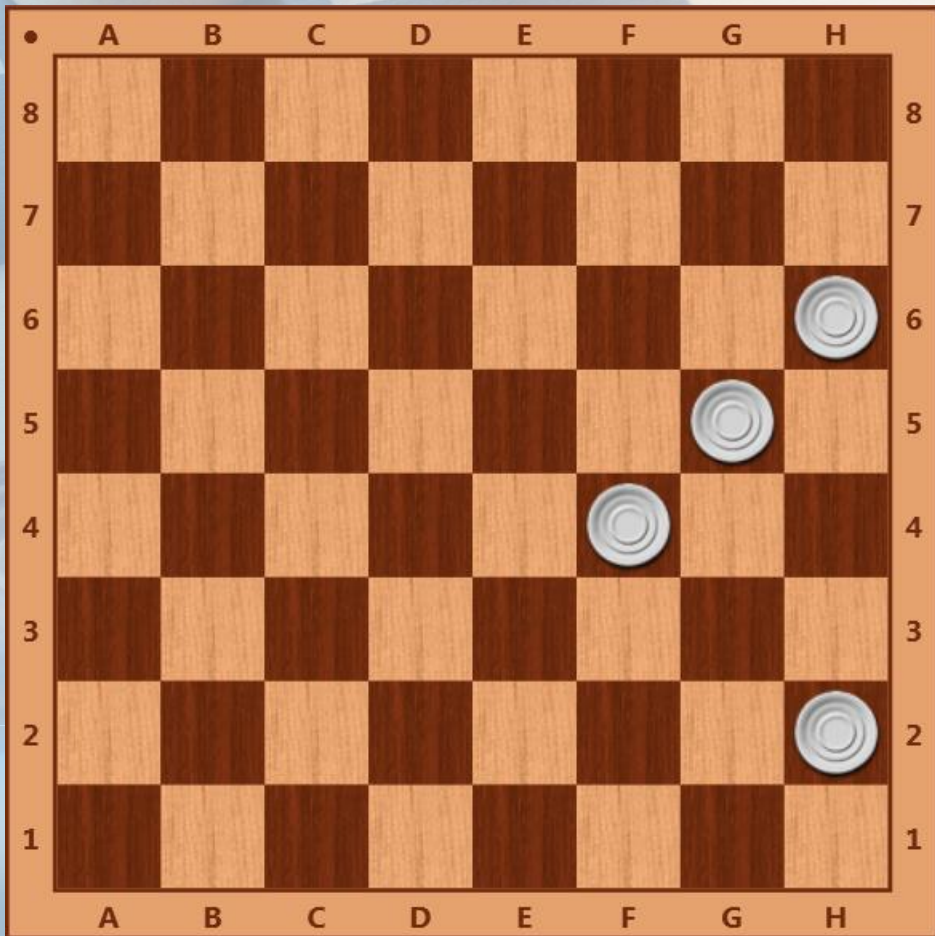


**Петля –  
это расстановка шашек для поимки  
вражеской дамки**

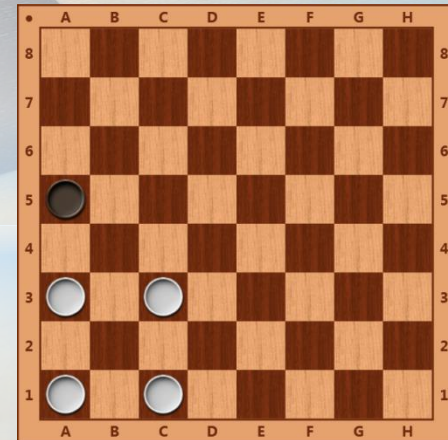
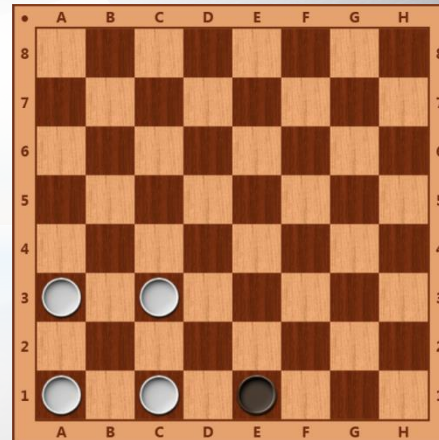
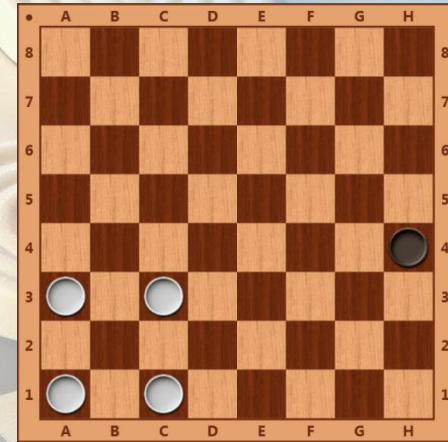
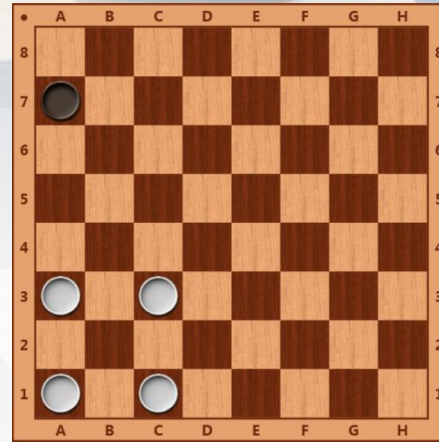
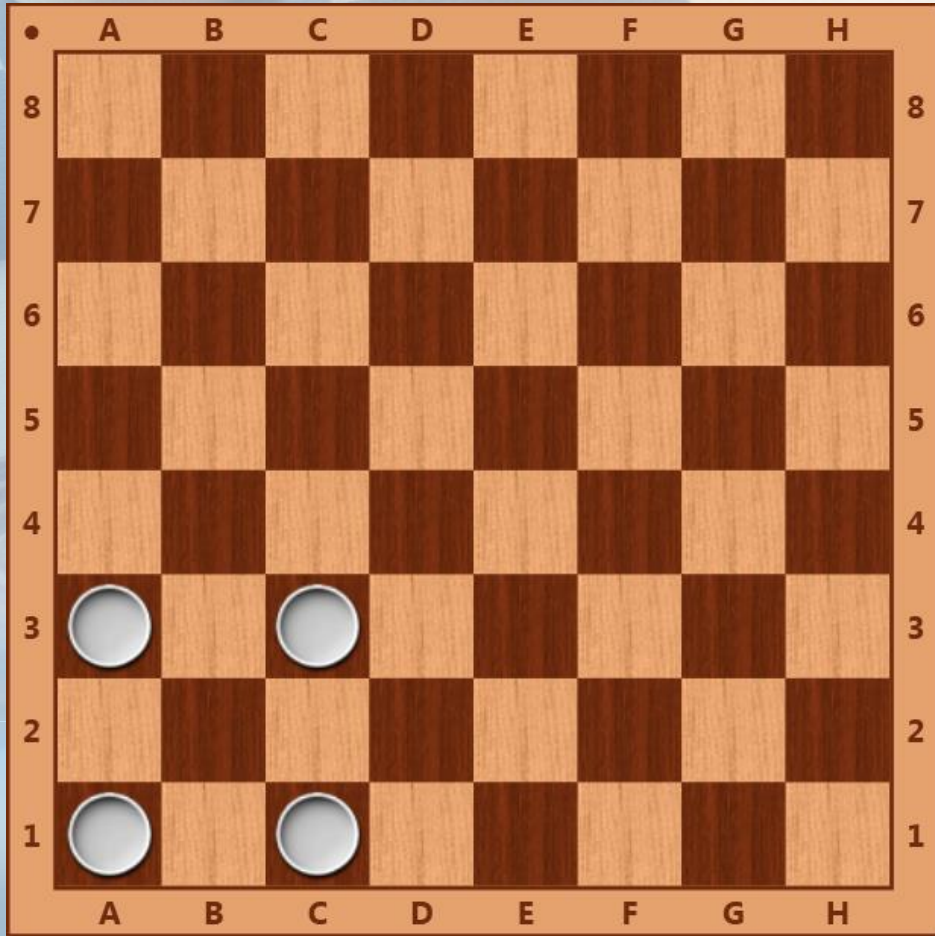
# Первое построение



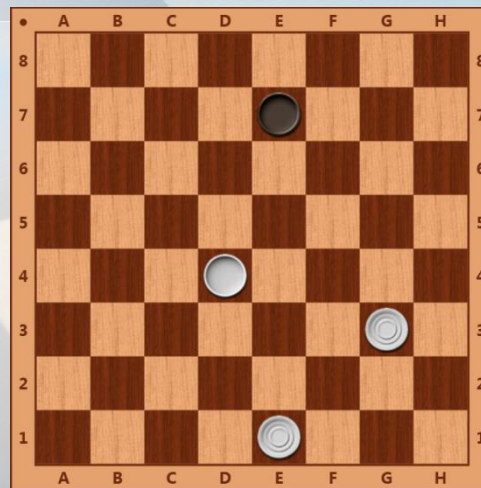
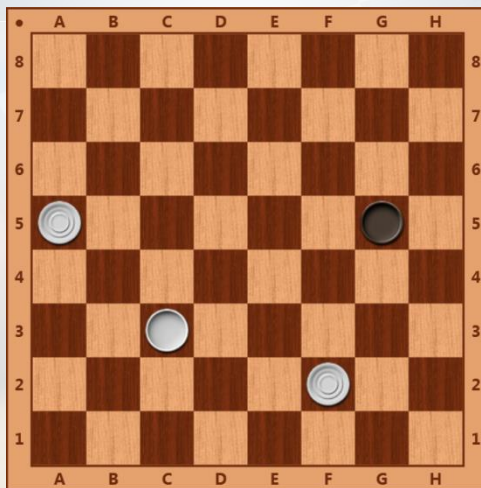
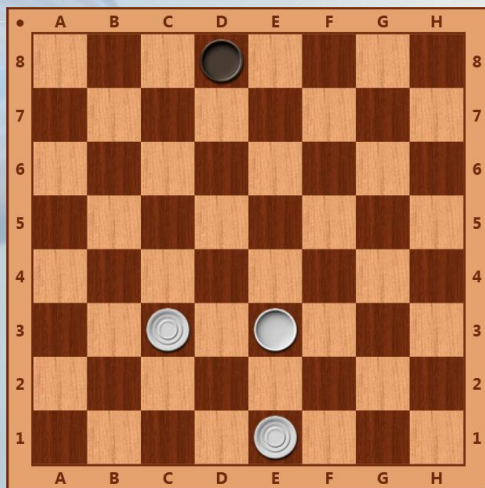
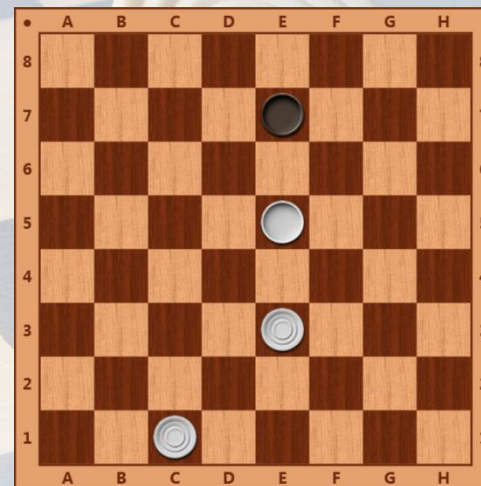
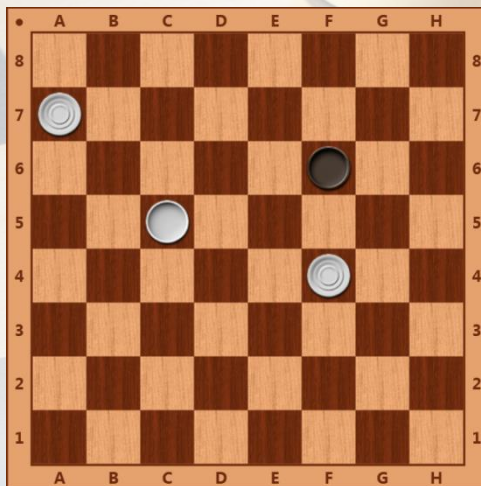
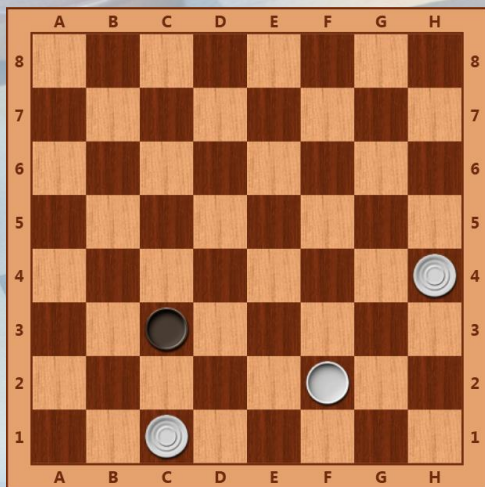
# Второе построение



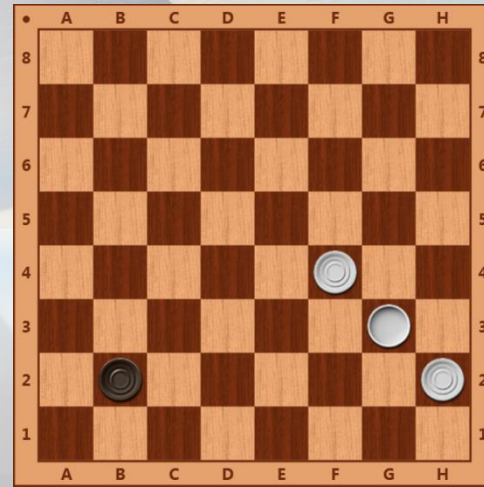
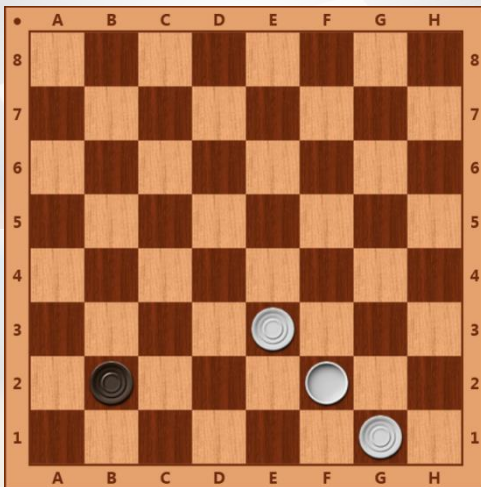
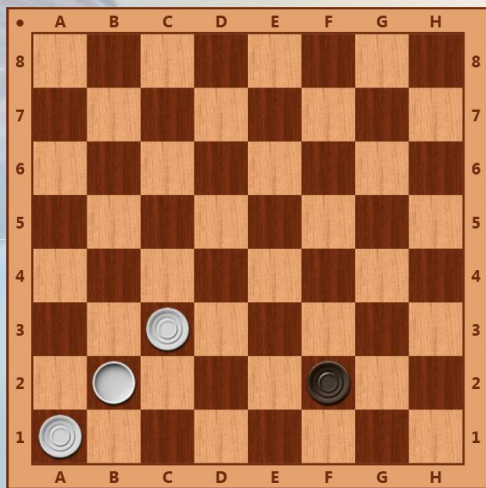
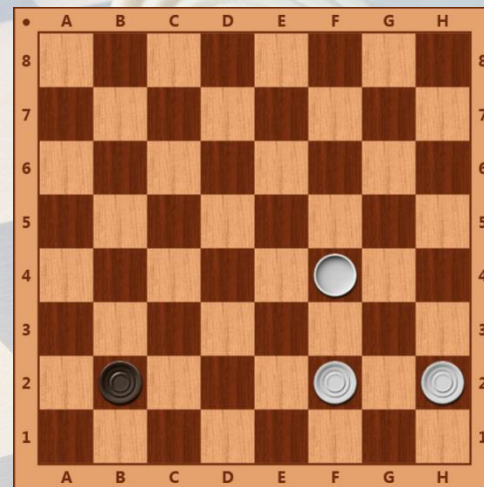
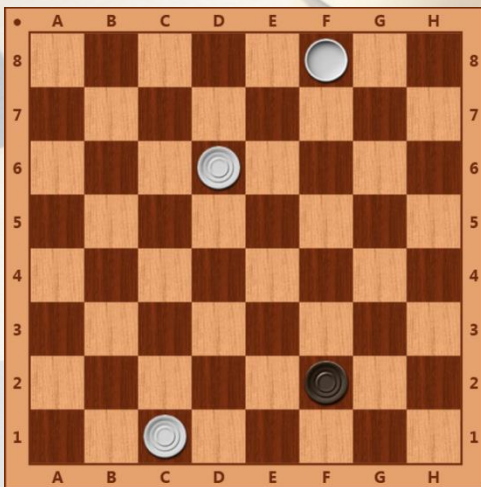
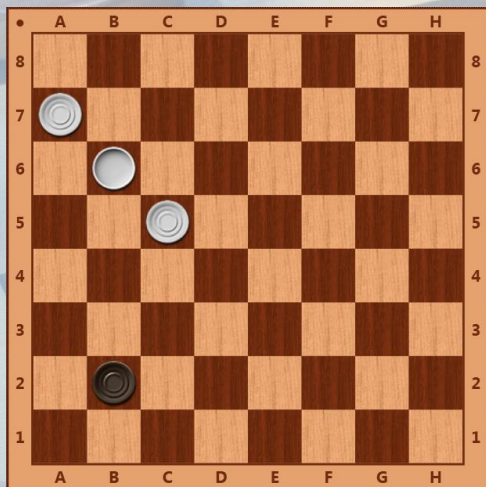
# Третье построение



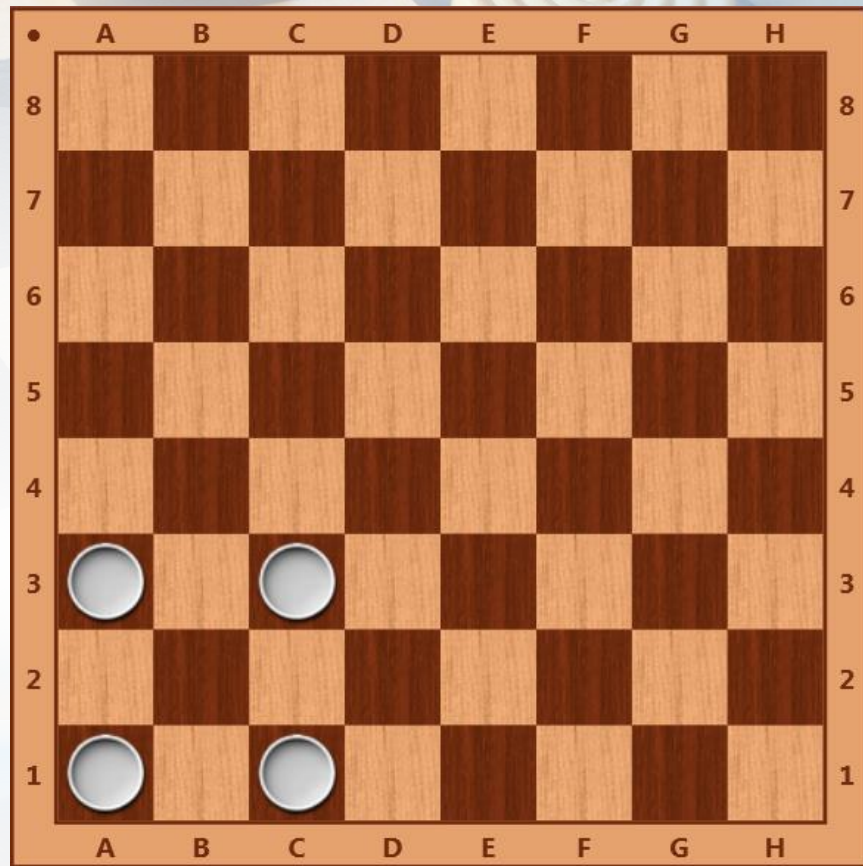
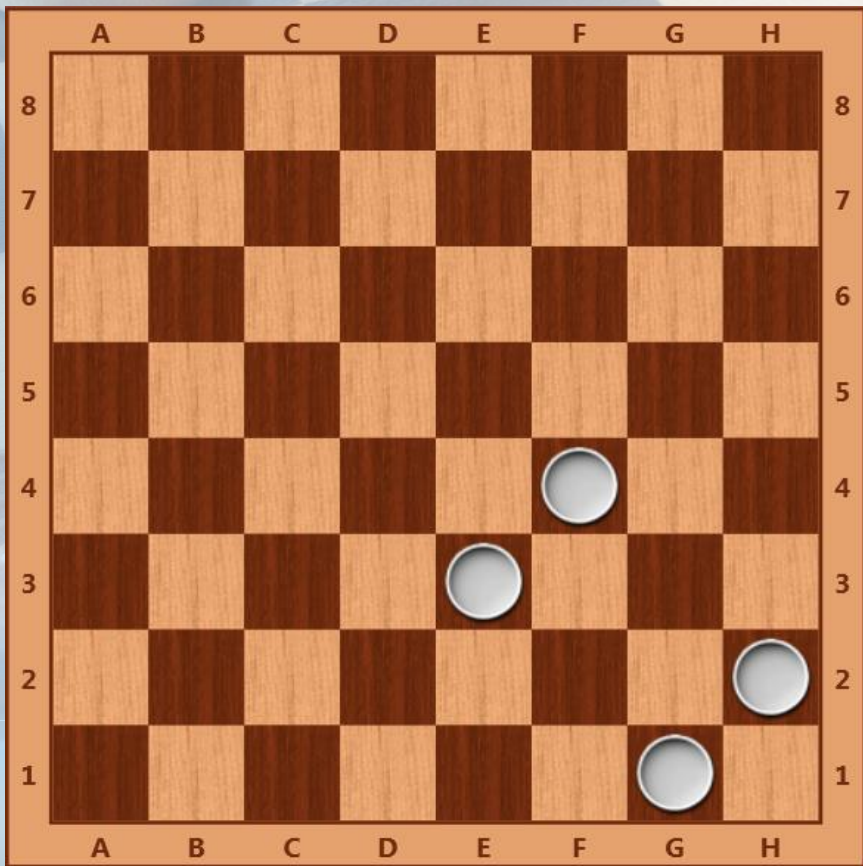
# Белые выигрывают с помощью



# Чёрная шашка на преддамочном поле



# Проверочная работа в парах





A close-up, high-angle shot of a wooden chessboard. The board is checkered with light and dark squares. Several chess pieces are visible, including a king and a queen, both with a spiral pattern on top. The pieces are arranged in a way that suggests a game in progress. The lighting is soft, creating a warm and focused atmosphere.

**МОЛОДЦЫ!**